

C.I.P.

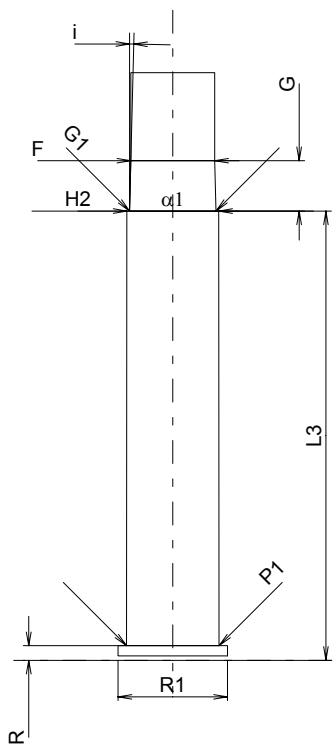
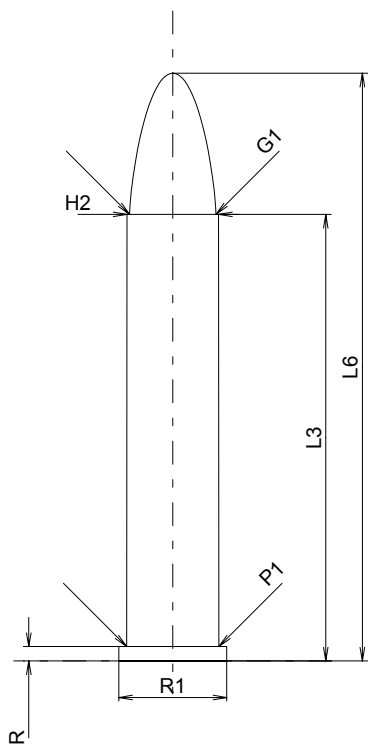
300 Sherwood

Country of Origin: GB

TAB. II

Date 84-06-14

Revision 02-05-15



Scale 1.5:1

CARTRIDGE MAXI

Lengths

L1	=	
L2	=	
L3 ¹⁾	=	39.37
L4	=	
L5	=	
L6	=	51.82

Case Head

R ¹⁾	=	1.27	-0.25
R1	=	9.52	
R3	=		
E	=		
E1	=		
e min	=		
δ	=		
f	=		
β	=		

Powder Chamber

P1	=	8.13
P2	=	

Junction Cone

α	=	
S	=	
r1 min	=	
r2	=	

Collar

H1	=	
H2 ¹⁾	=	8.08

Projectile

G1 ¹⁾	=	7.62
G2	=	
F	=	
L3+G ¹⁾	=	43.81

Pressures (Energies)

Method Transducer

Pmax	=	1400 bar
PK	=	1610 bar
PE	=	1750 bar
M	=	25.00
EE	=	930 Joule

Miscellaneous Dimensions

Fe ¹⁾	=	0.15
delta L	=	

CHAMBER MINI

Lengths

L1	=	
L2	=	
L3 ¹⁾	=	39.62

Breech

R ¹⁾	=	1.30
R1	=	9.65
R2	=	
R3	=	
r	=	

Powder Chamber

E	=	
P1 ¹⁾	=	8.15
P2	=	

Junction Cone

α	=	
S	=	
r1 max	=	
r2	=	

Collar

H1	=	
H2 ¹⁾	=	8.10

Commencement of Rifling

G1 ^{1)*}	=	7.62
G ^{1)*}	=	4.44
$\alpha 1$	=	180°
h	=	
s	=	
i ¹⁾	=	1°25'09"
w	=	

Barrel

F ^{1)*}	=	7.40
Z ¹⁾	=	7.62

Grooves

b	=	
N	=	
u	=	508.00
Q	=	43.01 mm ²

Notes: 1) Check for safety reasons
* Basic dimensions

Dimensions in << mm >>
Dimensions and Tolerances for Proof Barrels
see Appendix CR 1.